

SECTION 12

Township 78-North; Range 2

EAST OF THE FIFTH PRINCIPAL MERIDIAN

SCOTT COUNTY, IOWA

BLUE GRASS TOWNSHIP

SCALE IN CHAINS

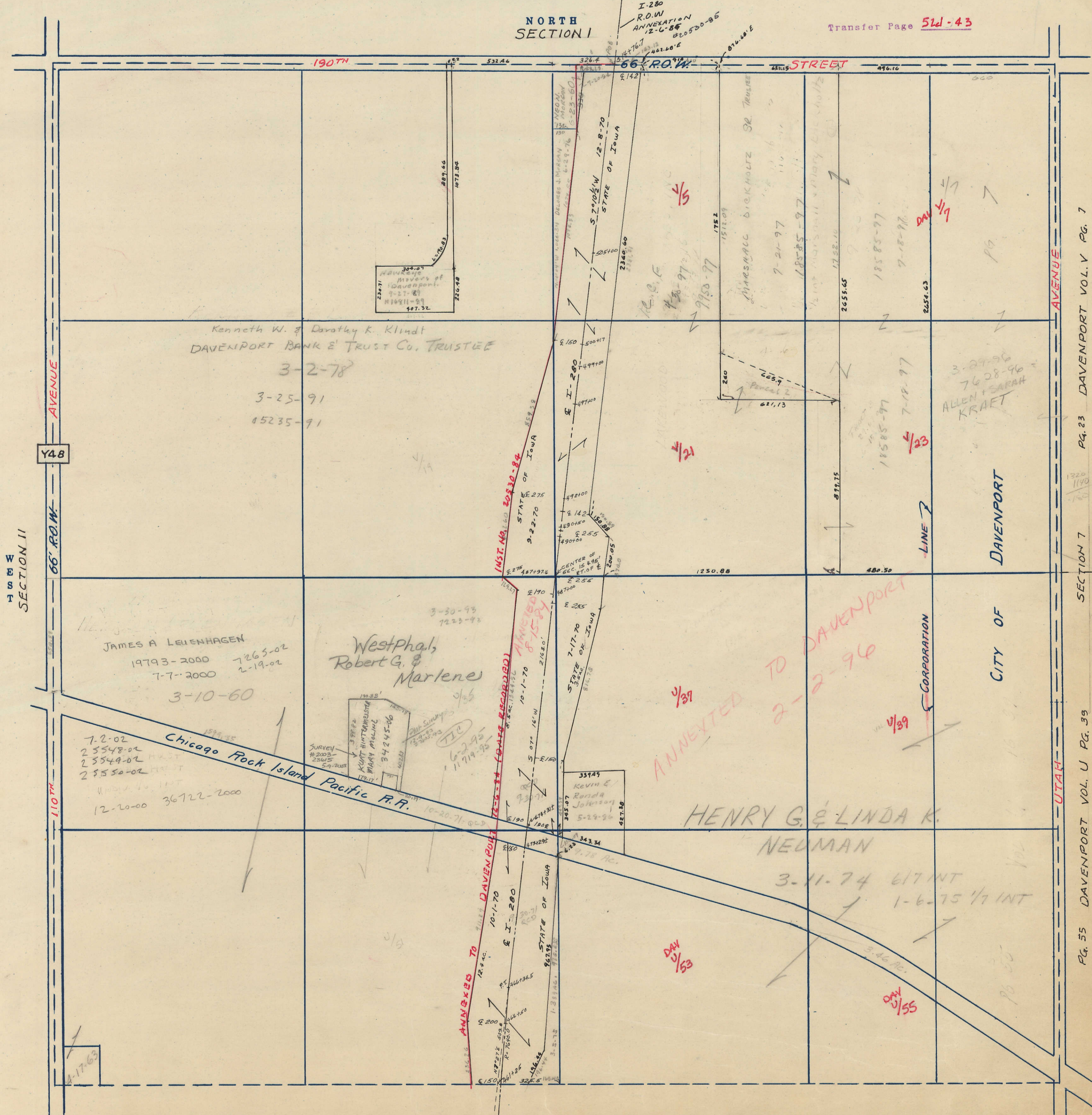


SCALE IN FEET



NORTH SECTION 1

Transfer Page 51d-43



SECTION 11 NORTH

Y48

66' R.O.W.

110' R.O.W.

DAVENPORT AVENUE

UTAH

SECTION 7 DAVENPORT VOL. V PG. 7

PG. 55 DAVENPORT VOL. U PG. 39

SOUTH SECTION 13